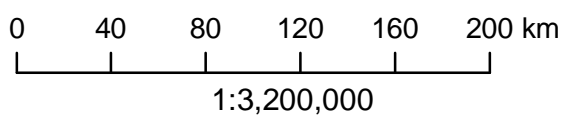
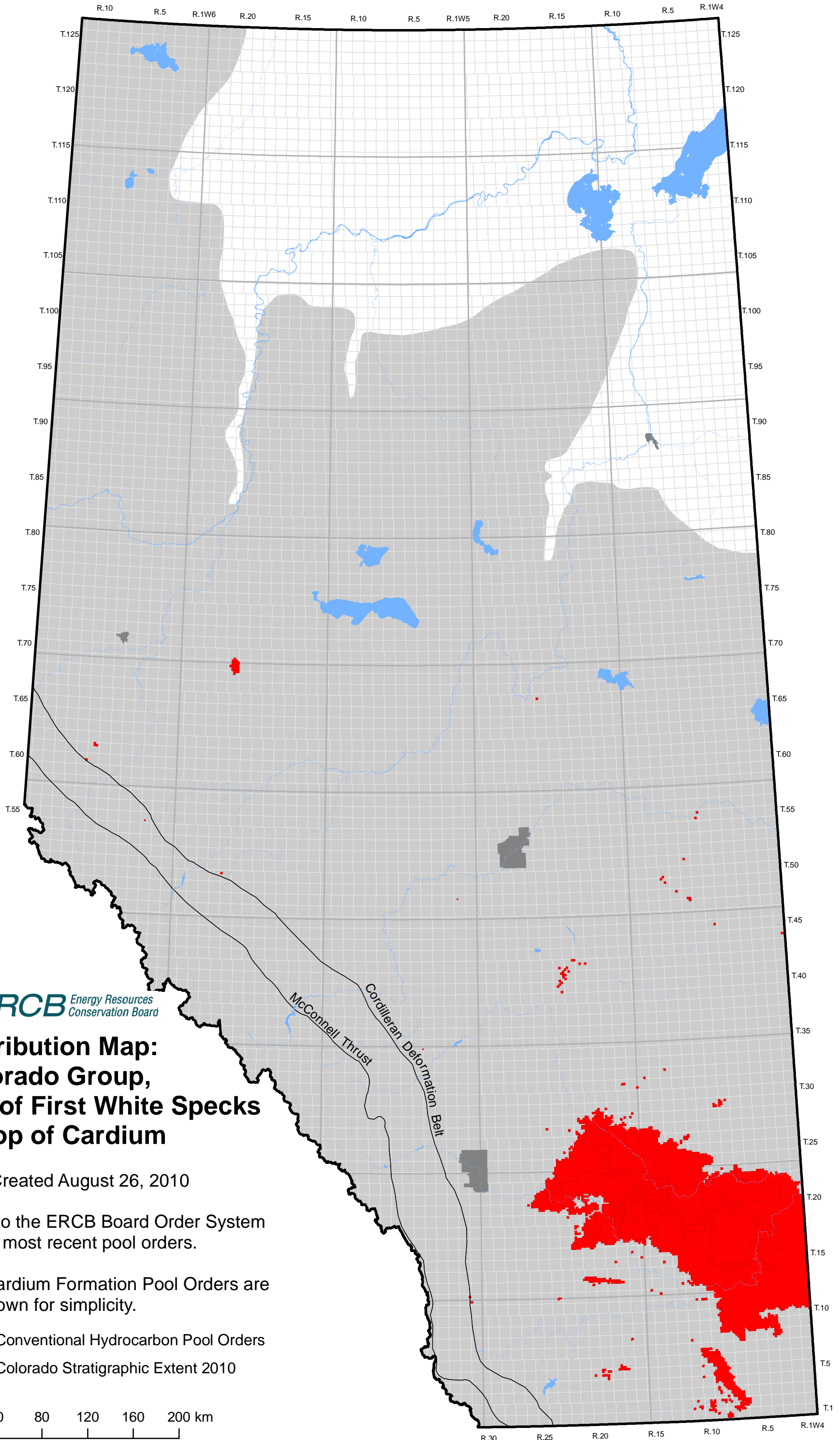


Cross Section Index Map: Colorado Group

Date Created August 26, 2010

- Cross Sections
- Colorado Stratigraphic Extent 2010





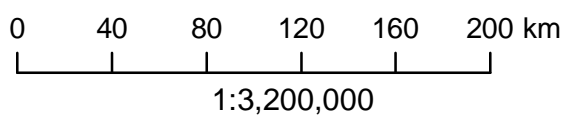
Distribution Map: Colorado Group, Top of First White Specks to Top of Cardium

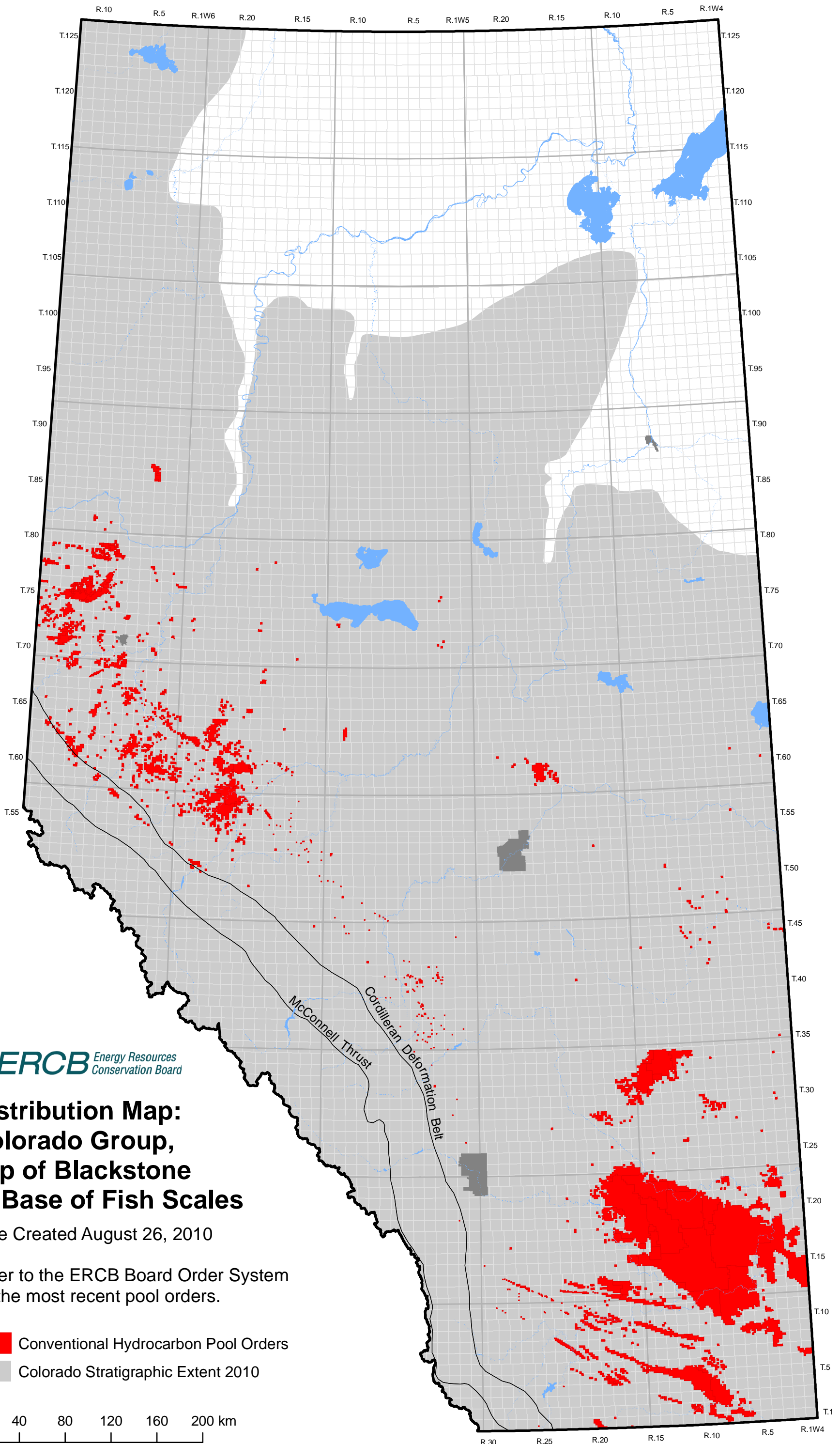
Date Created August 26, 2010

Refer to the ERCB Board Order System for the most recent pool orders.

The Cardium Formation Pool Orders are not shown for simplicity.

- Conventional Hydrocarbon Pool Orders
- Colorado Stratigraphic Extent 2010





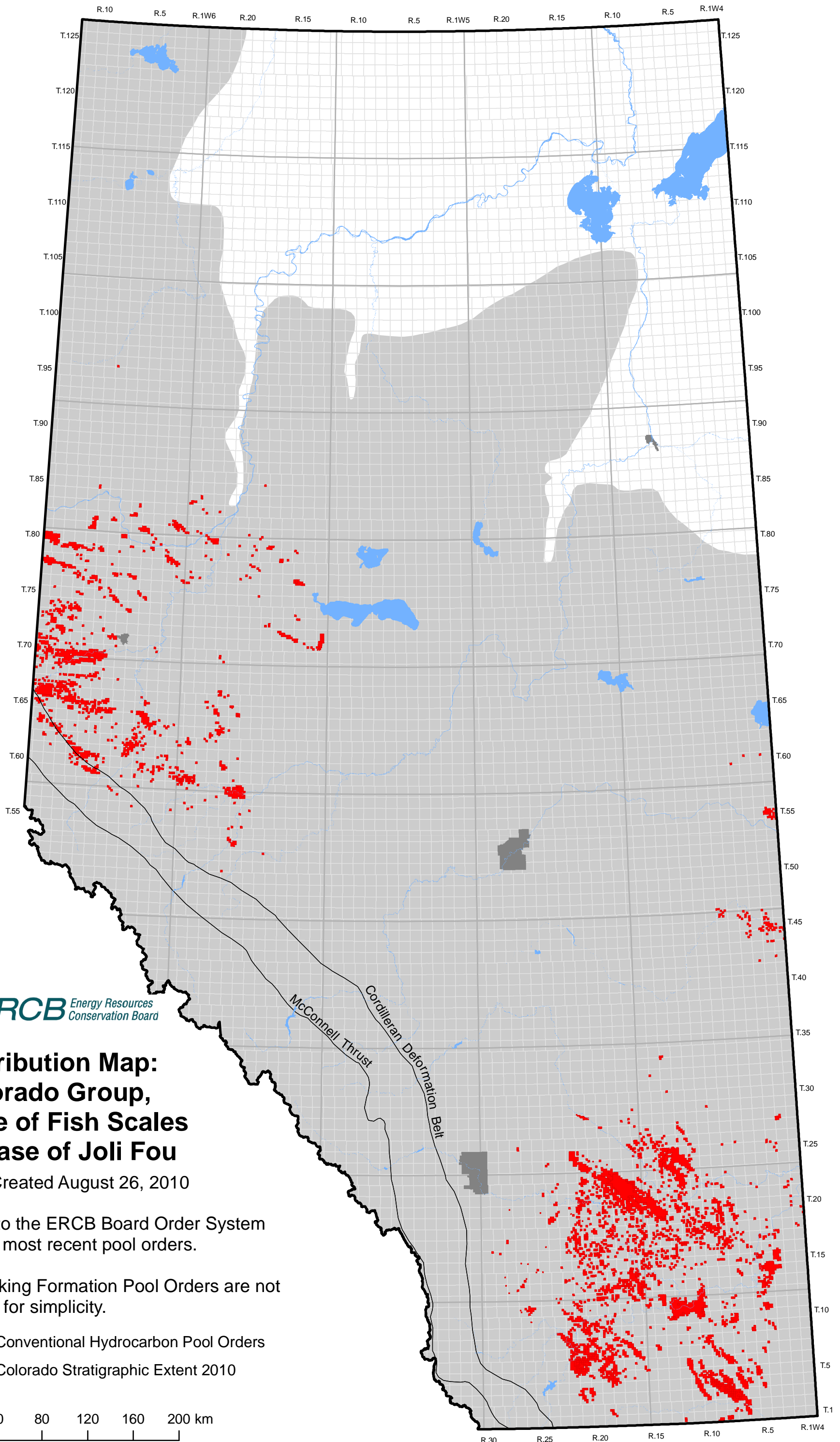
Distribution Map: Colorado Group, Top of Blackstone to Base of Fish Scales

Date Created August 26, 2010

Refer to the ERCB Board Order System
for the most recent pool orders.

- Conventional Hydrocarbon Pool Orders
- Colorado Stratigraphic Extent 2010

0 40 80 120 160 200 km
1:3,200,000



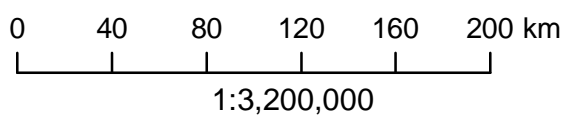
**Distribution Map:
Colorado Group,
Base of Fish Scales
to Base of Joli Fou**

Date Created August 26, 2010

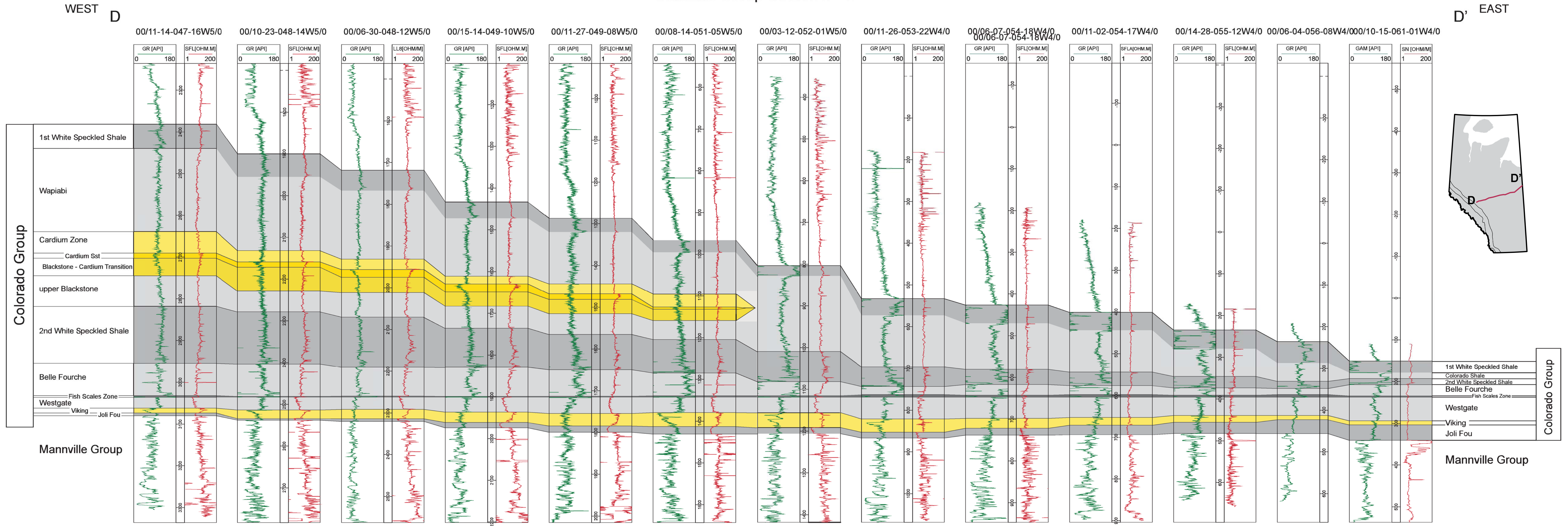
Refer to the ERCB Board Order System
for the most recent pool orders.

The Viking Formation Pool Orders are not
shown for simplicity.

- Conventional Hydrocarbon Pool Orders
- Colorado Stratigraphic Extent 2010



Colorado Group Section D - D'

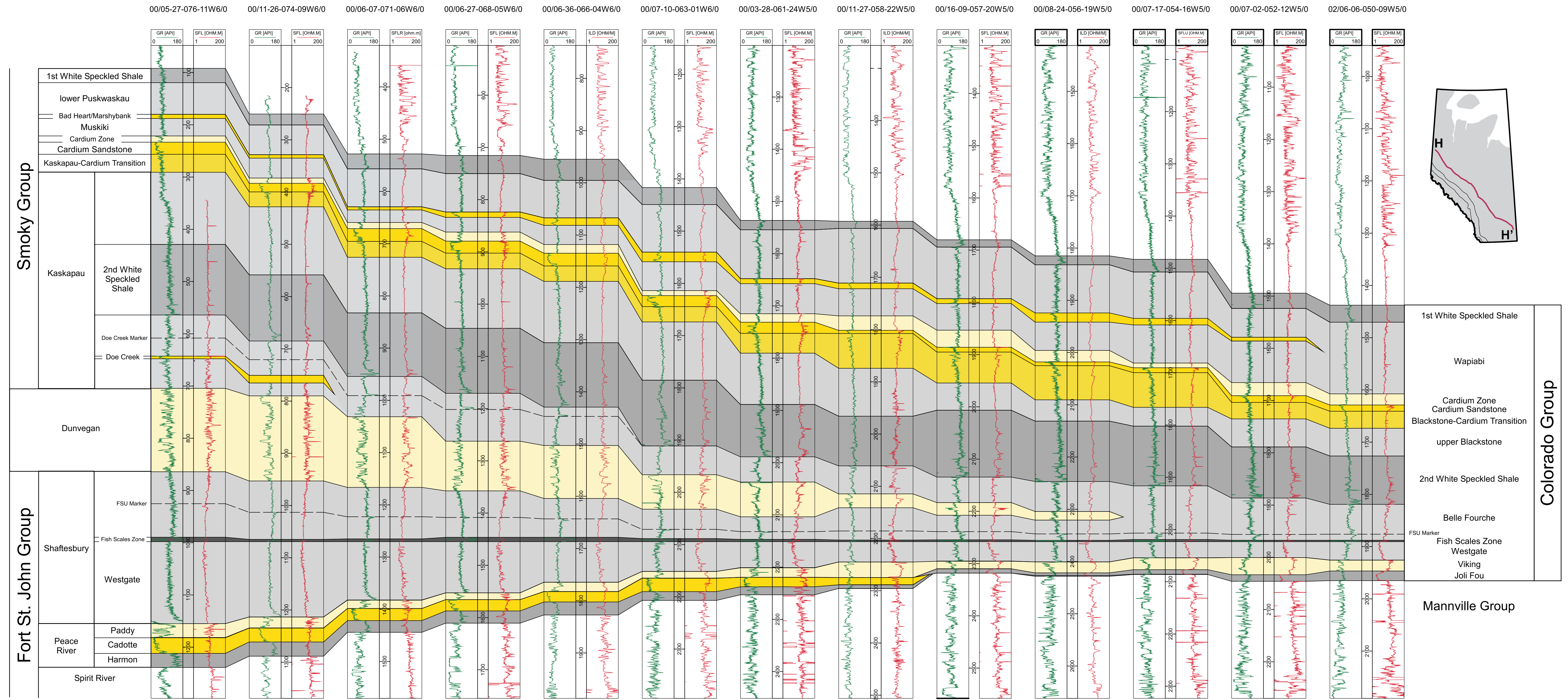


This cross section is illustrative to show generalized lithological character and the tops may not precisely represent current ERCB tops or designations.

North

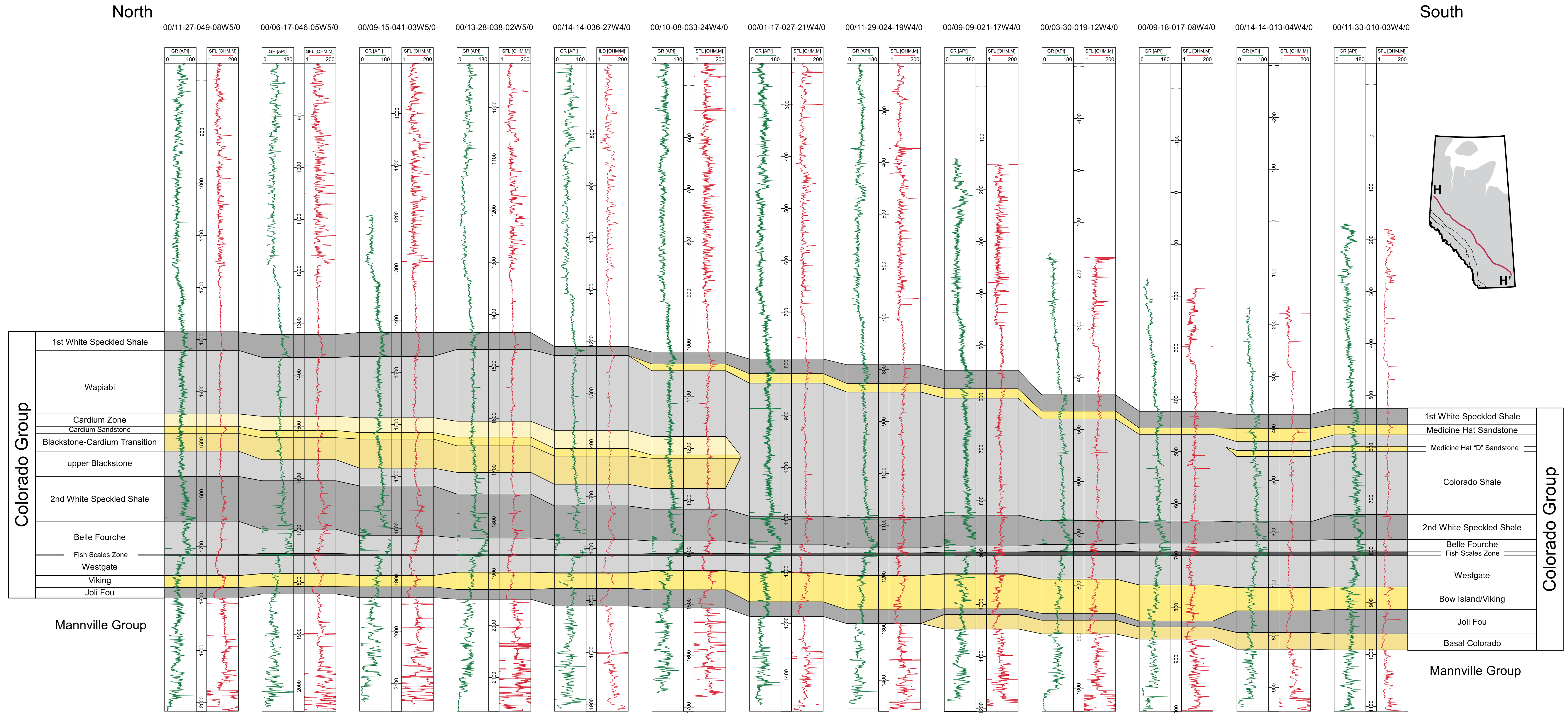
Colorado Group Section H - H' (north part)

South

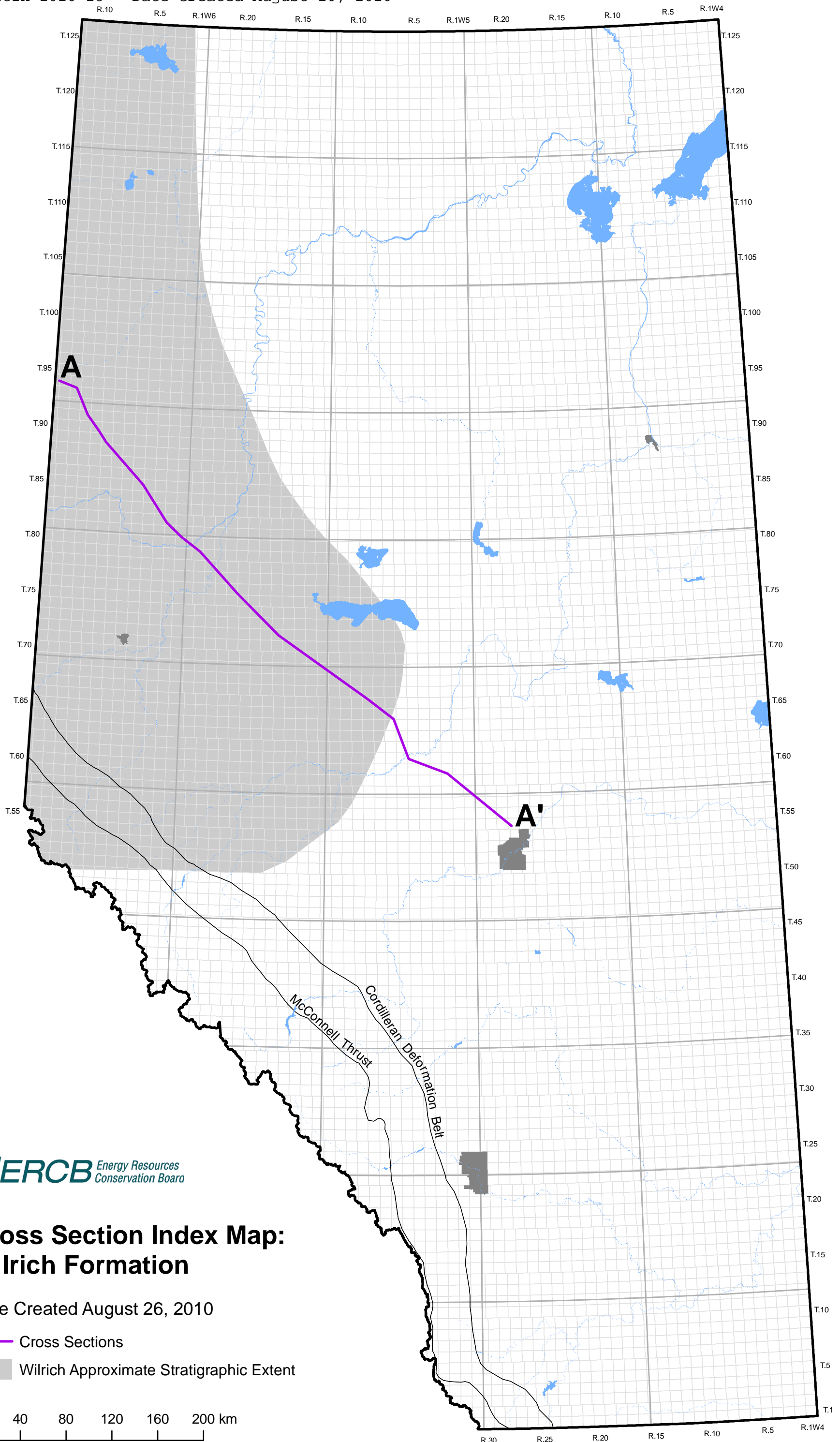


This cross section is illustrative to show generalized lithological character and the tops may not precisely represent current ERCB tops or designations.

Colorado Group Section H - H' (south part)



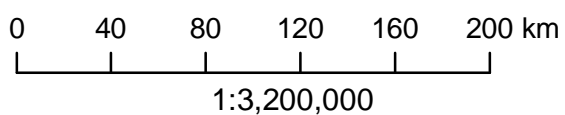
This cross section is illustrative to show generalized lithological character and the tops may not precisely represent current ERCB tops or designations.



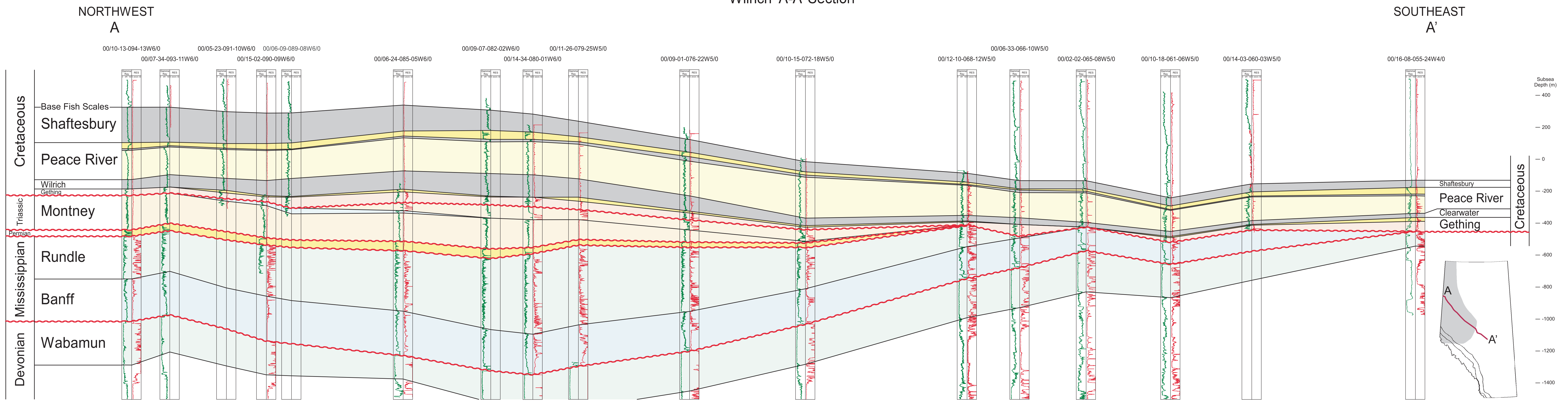
Cross Section Index Map: Wilrich Formation

Date Created August 26, 2010

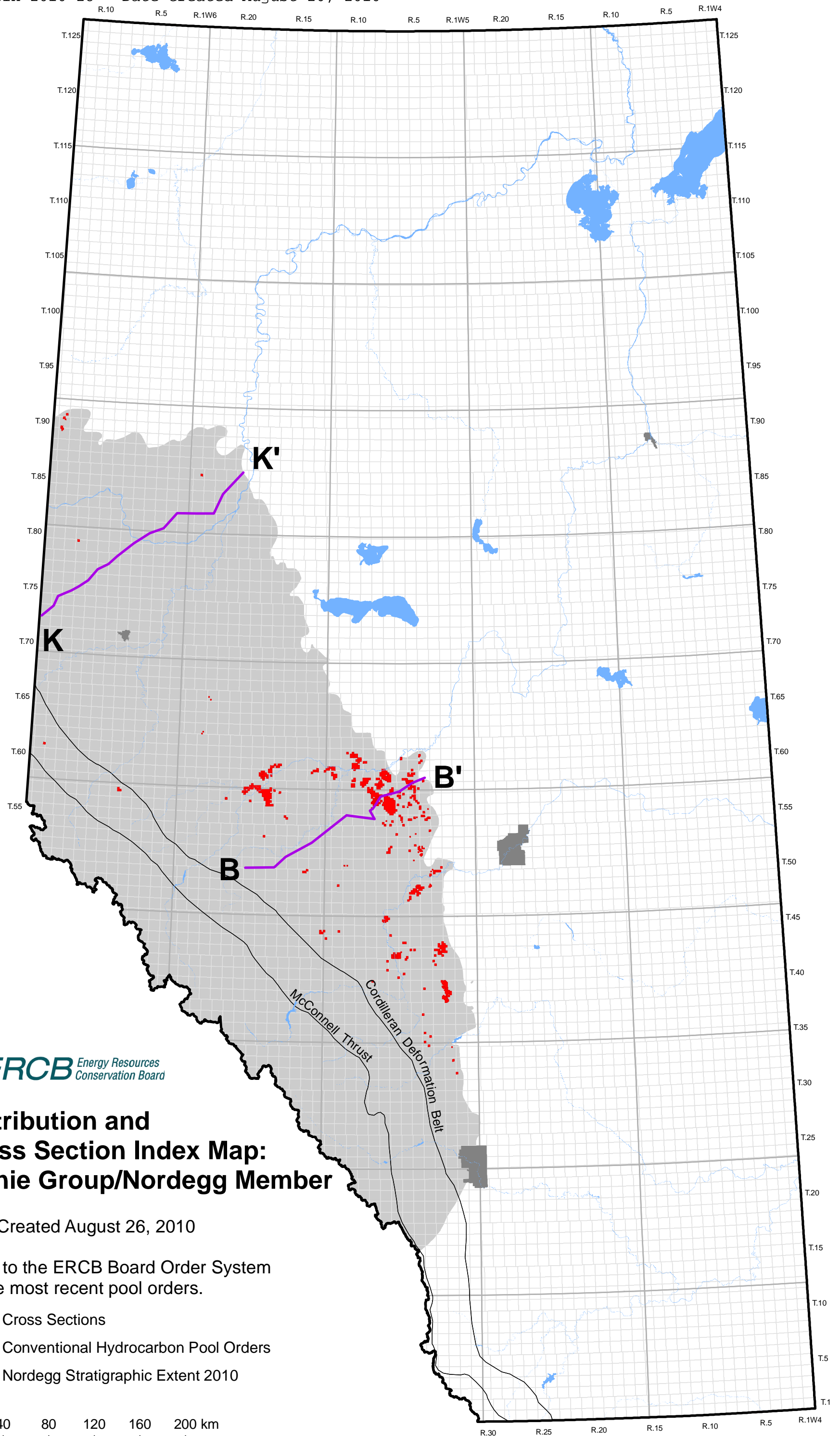
- Cross Sections
- Wilrich Approximate Stratigraphic Extent



Wilrich A-A' Section






This cross section is illustrative to show generalized lithological character and the tops may not precisely represent current ERCB tops or designations.



Distribution and Cross Section Index Map: Fernie Group/Nordegg Member

Date Created August 26, 2010

Refer to the ERCB Board Order System for the most recent pool orders.

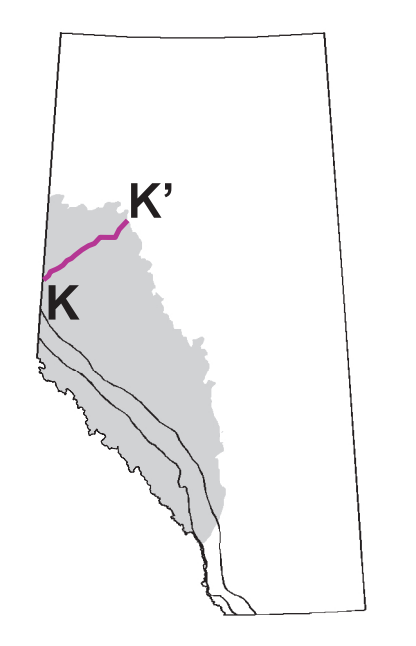
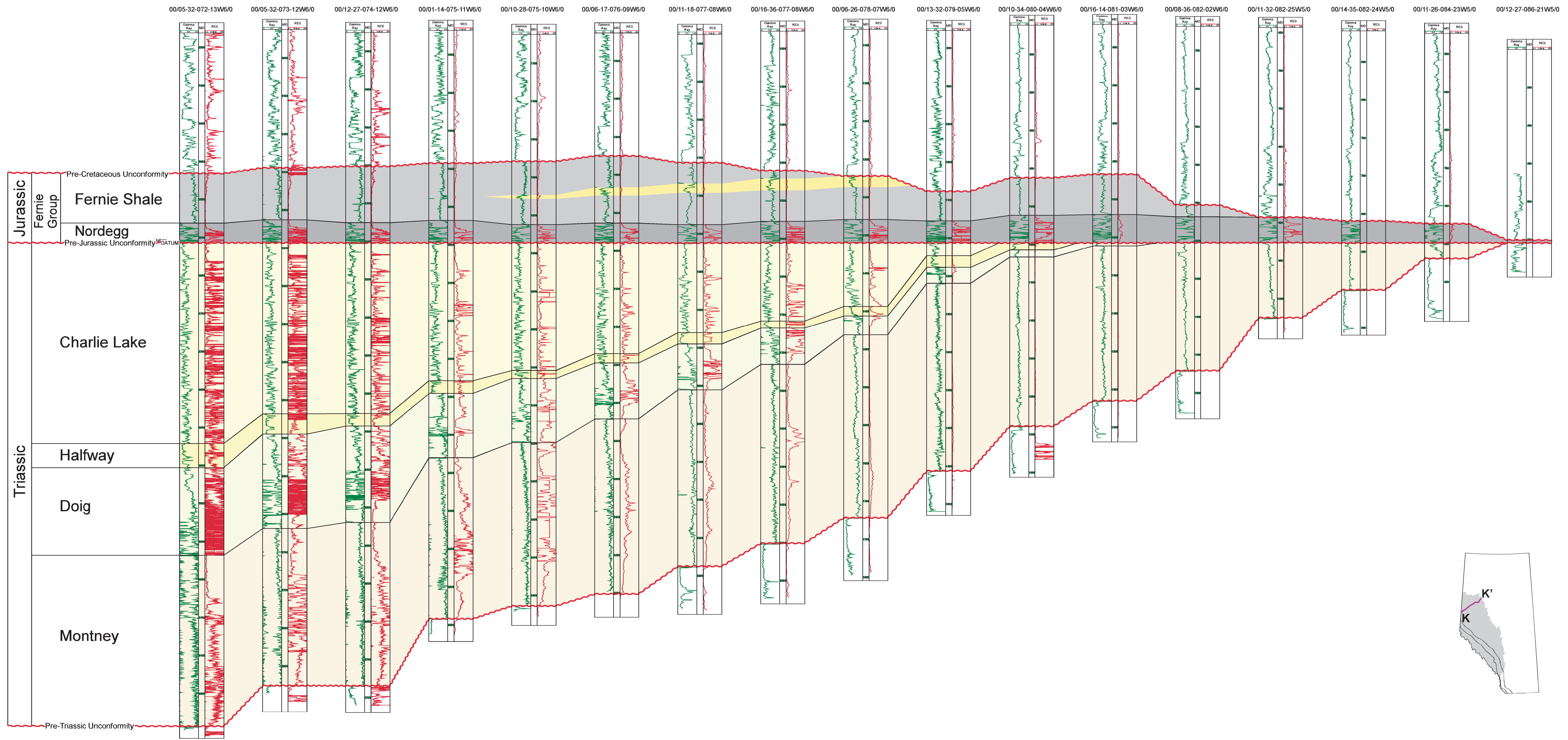
-  Cross Sections
-  Conventional Hydrocarbon Pool Orders
-  Nordegg Stratigraphic Extent 2010

0 40 80 120 160 200 km
1:3,200,000

SOUTHWEST
K

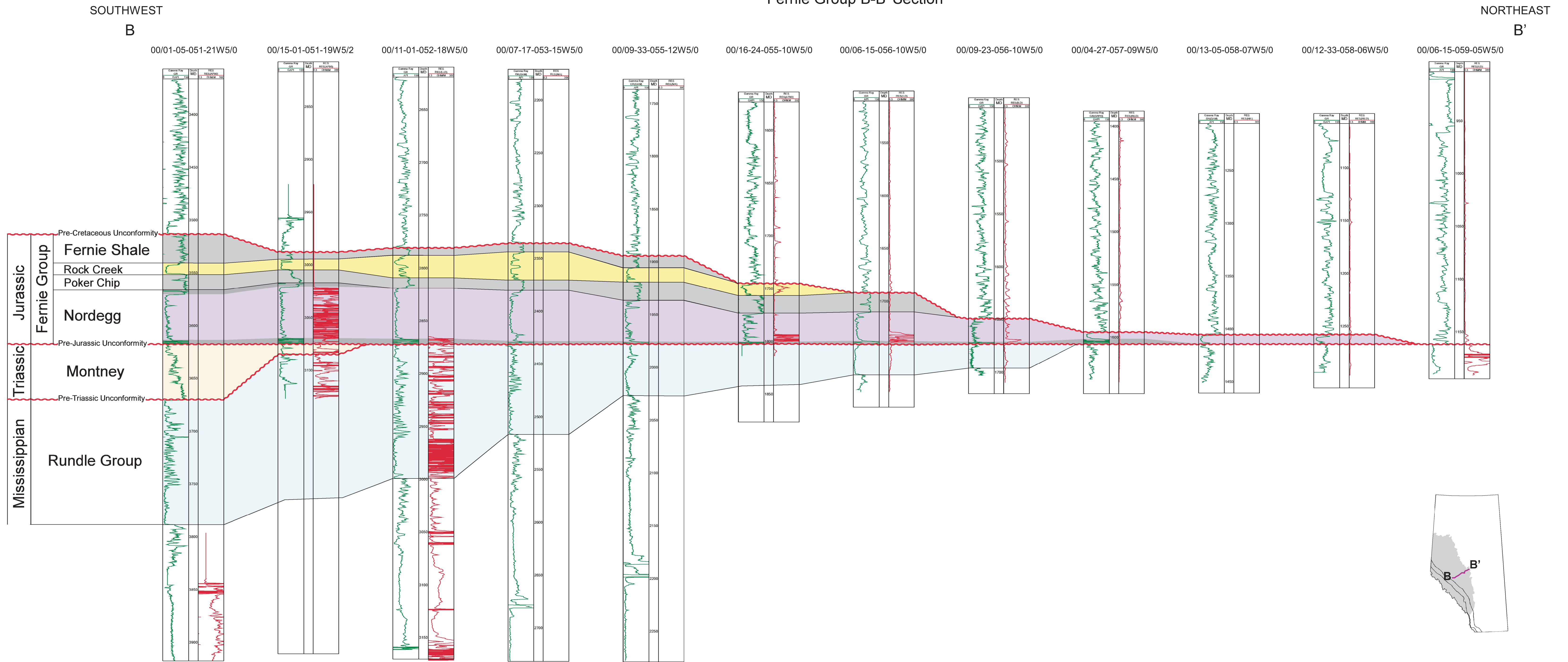
Fernie Group K-K' Section

NORTHEAST
K'

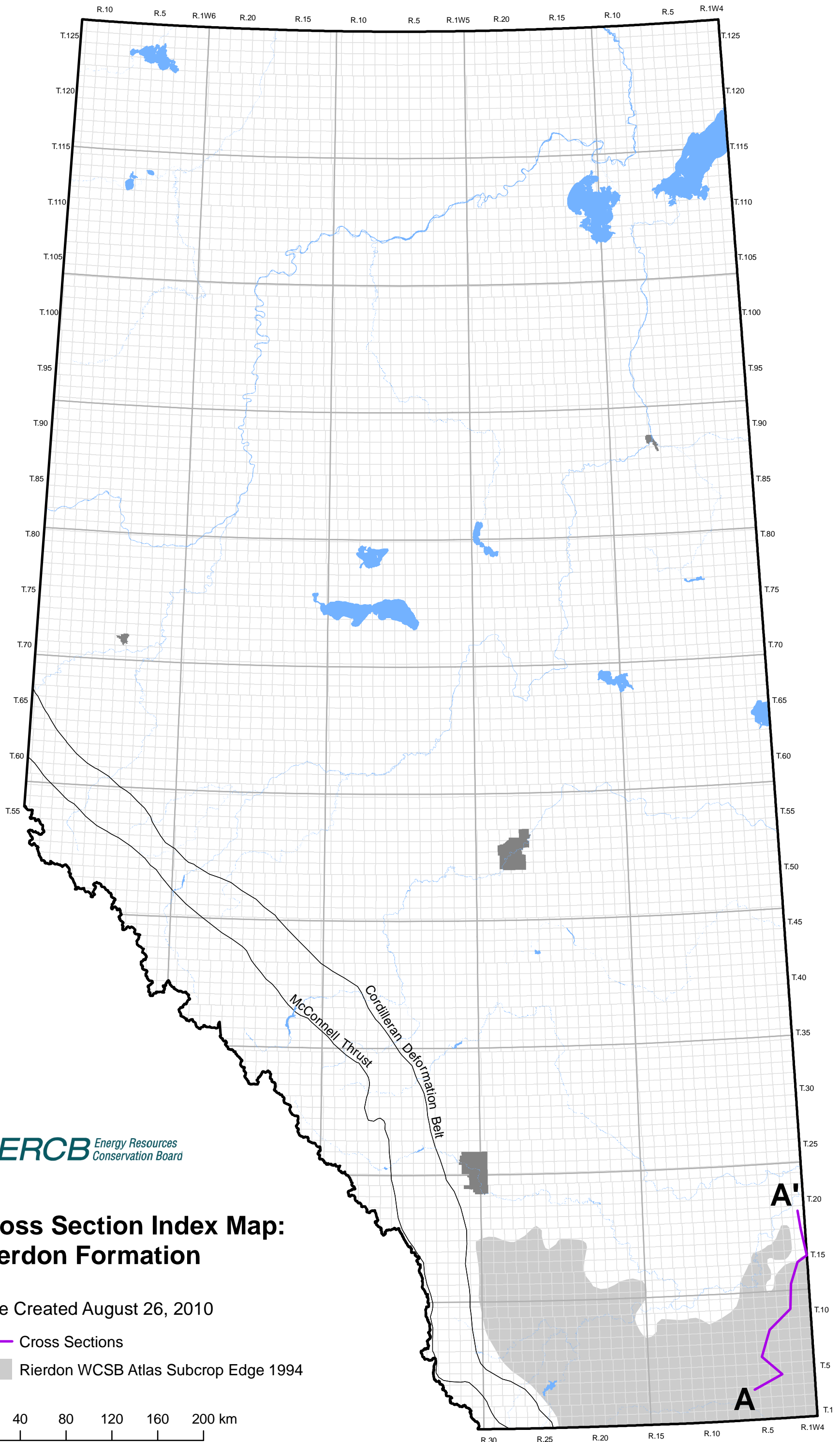


This cross section is illustrative to show generalized lithological character and the tops may not precisely represent current ERCB tops or designations.

Fernie Group B-B' Section



This cross section is illustrative to show generalized lithological character and the tops may not precisely represent current ERCB tops or designations.



Cross Section Index Map: Rierdon Formation

Date Created August 26, 2010

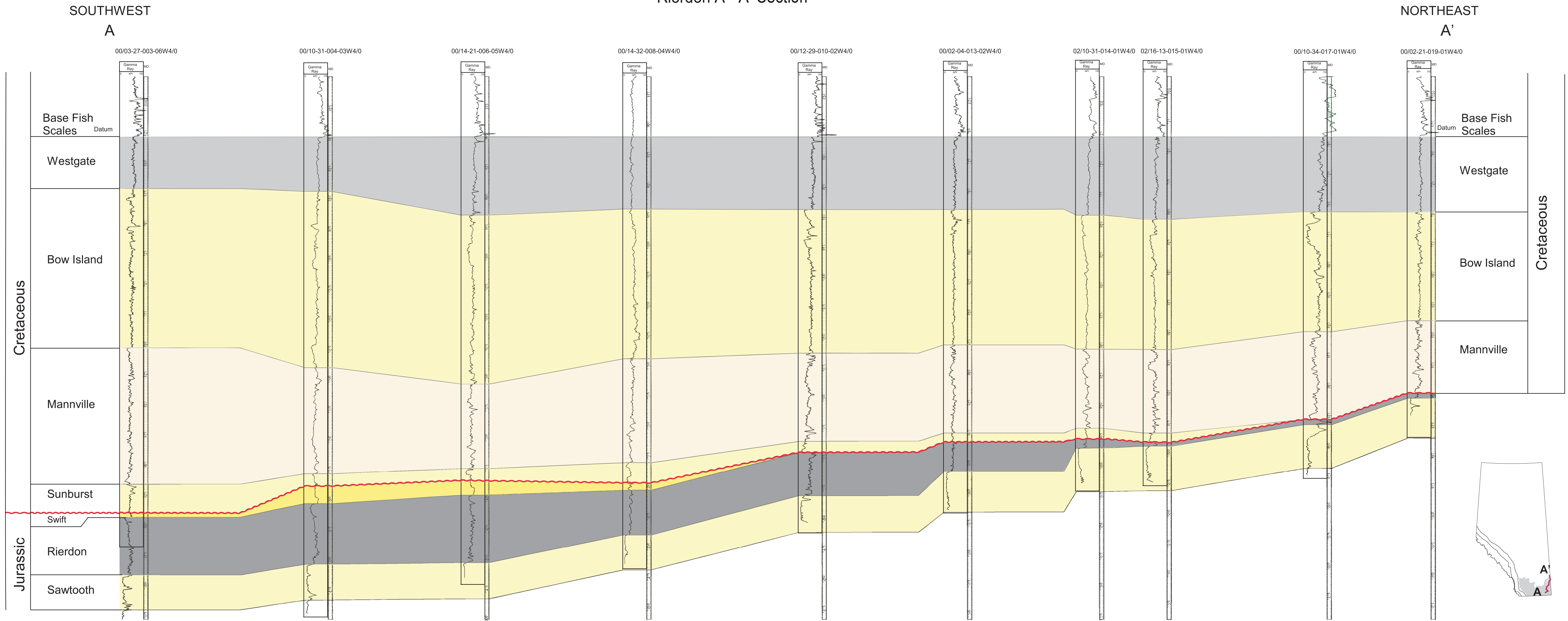
— Cross Sections

■ Rierdon WCSB Atlas Subcrop Edge 1994

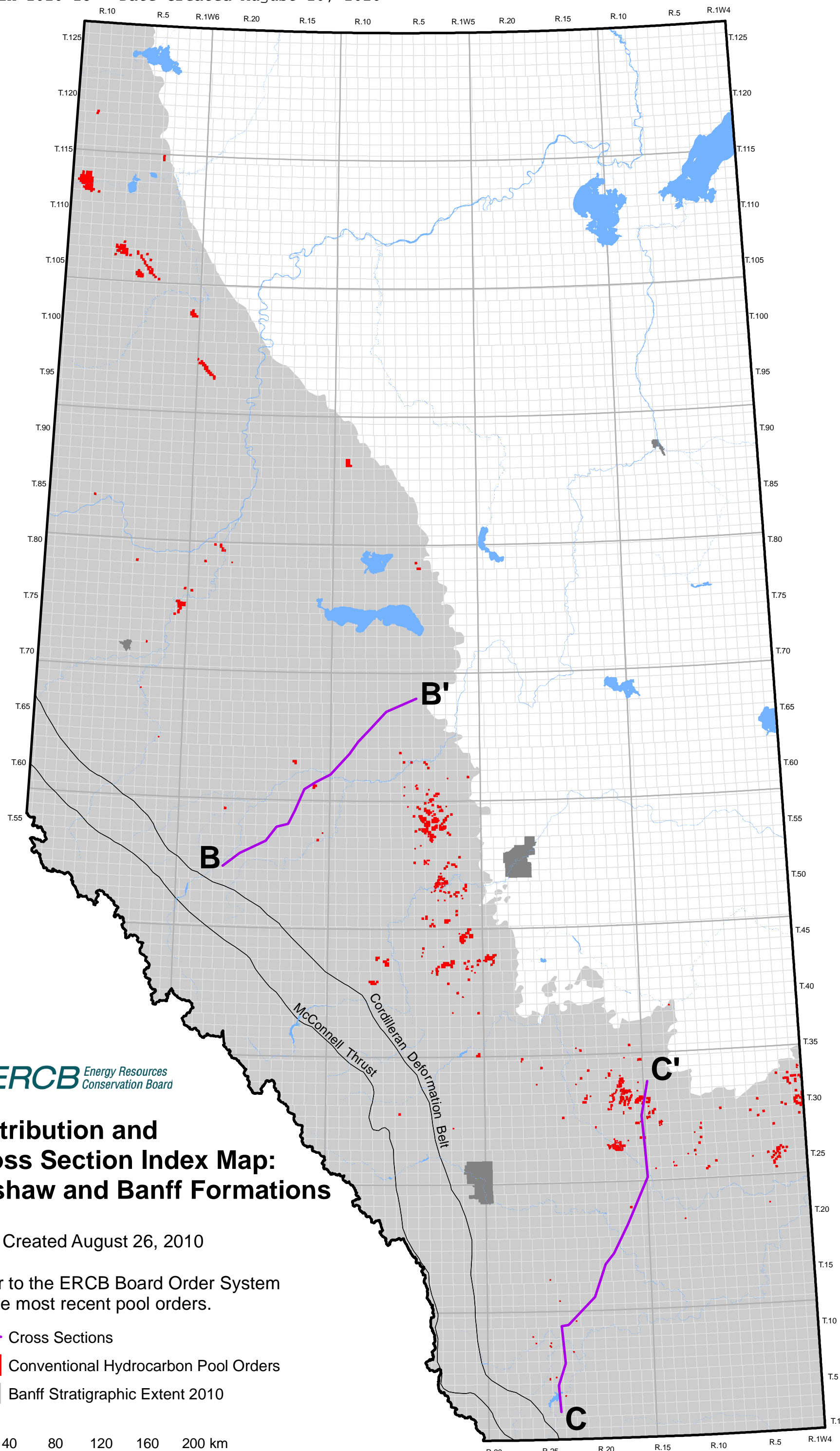
0 40 80 120 160 200 km

1:3,200,000

Rierdon A - A' Section



This cross section is illustrative to show generalized lithological character and the tops may not precisely represent current ERCB tops or designations.

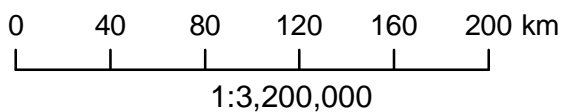


Distribution and Cross Section Index Map: Exshaw and Banff Formations

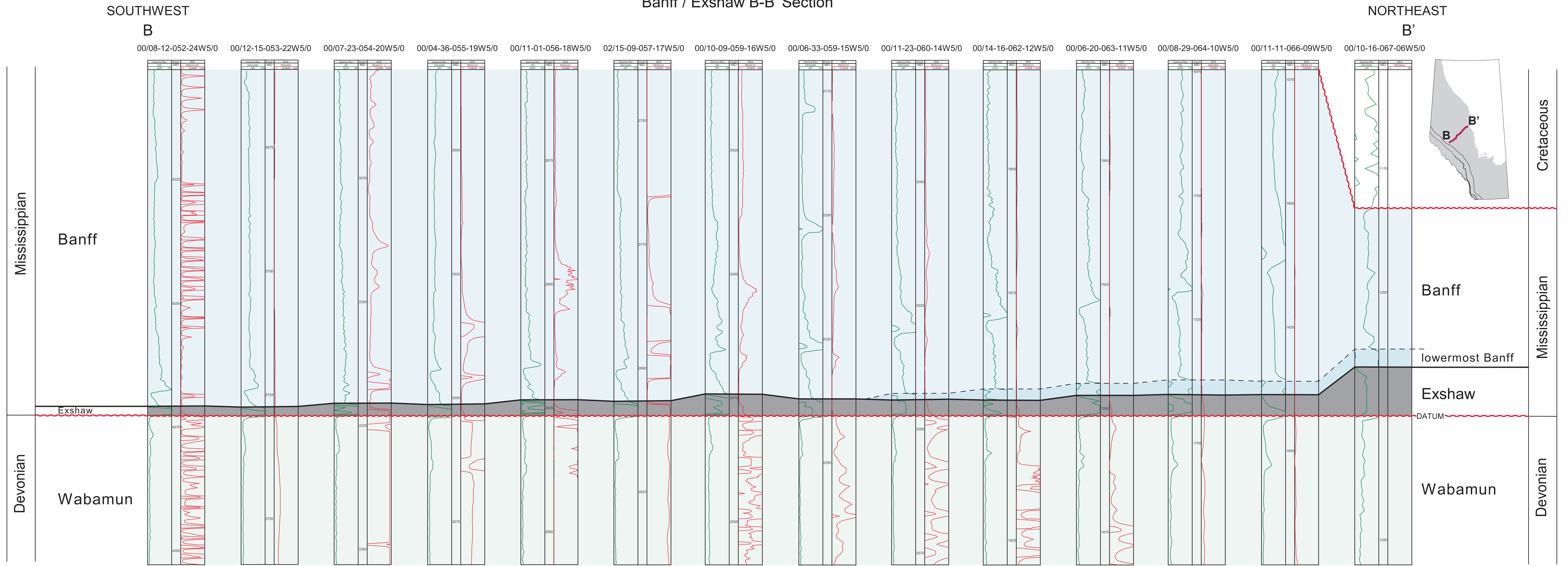
Date Created August 26, 2010

Refer to the ERCB Board Order System for the most recent pool orders.

- Cross Sections
- Conventional Hydrocarbon Pool Orders
- Banff Stratigraphic Extent 2010



Banff / Exshaw B-B' Section



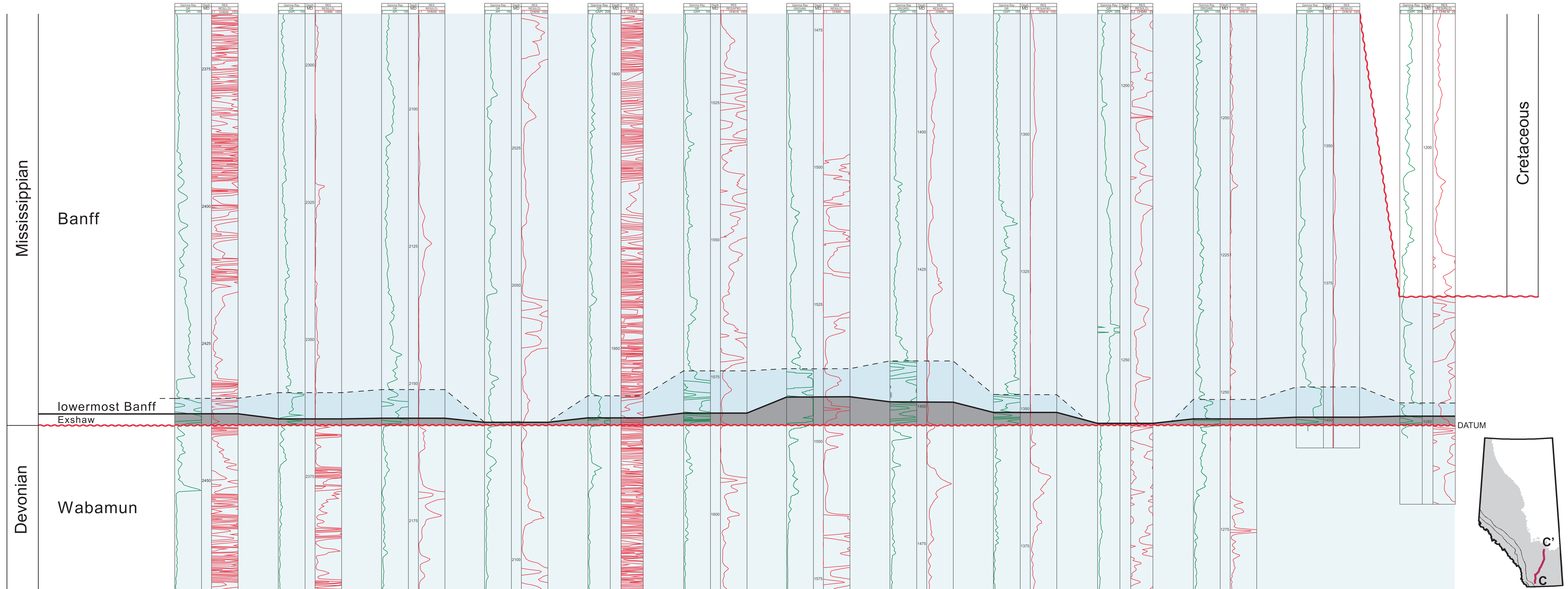
This cross section is illustrative to show generalized lithological character and the tops may not precisely represent current ERCB tops or designations. Note that the lowermost Banff may be the Exshaw Formation in ERCB database and this interpretation is a work in progress.

Banff / Exshaw C-C' Section

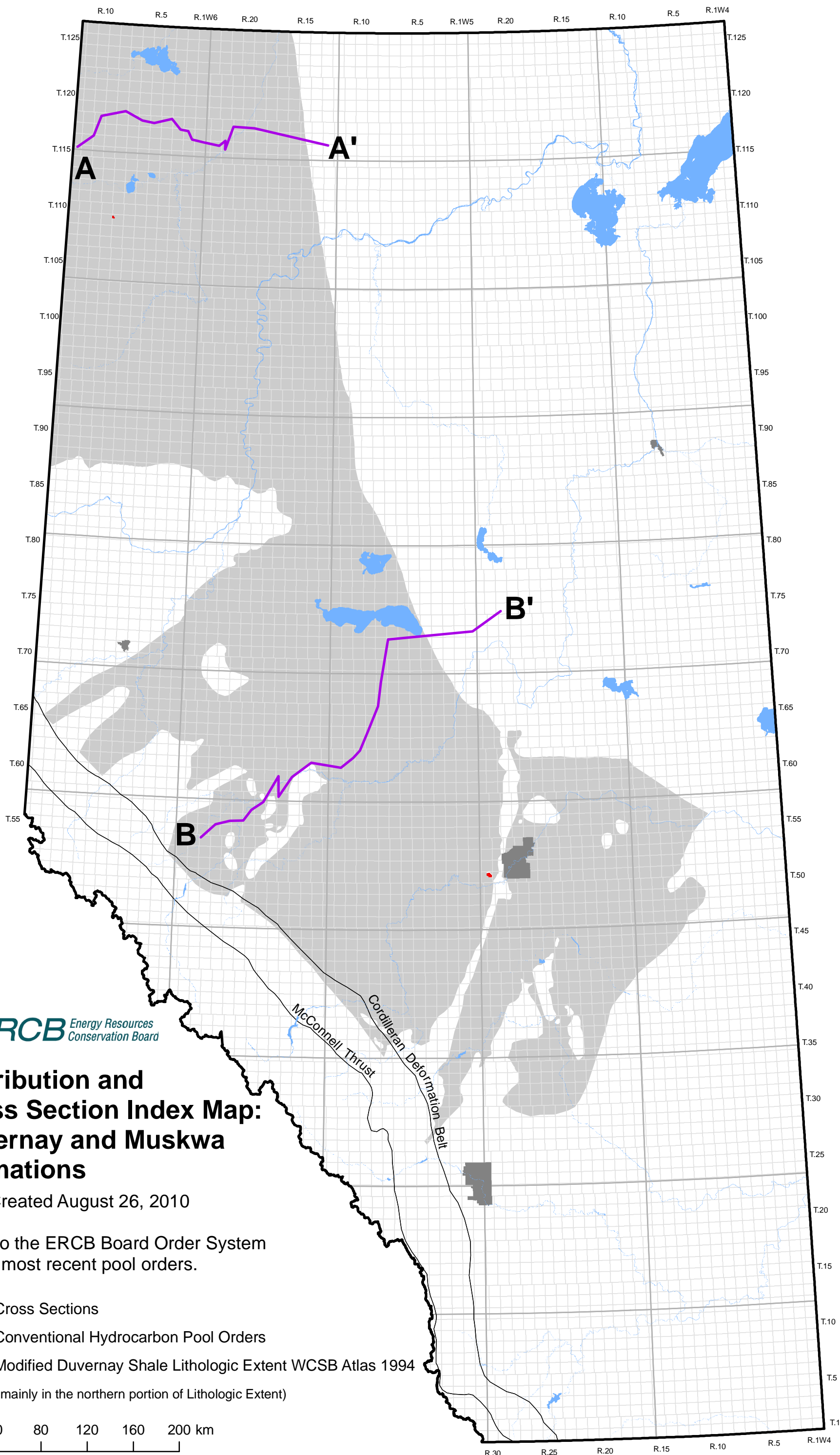
SOUTH
C

NORTH
C'

00/14-14-003-24W4/0 00/03-34-005-24W4/0 00/12-28-007-23W4/0 00/16-05-011-23W4/0 00/06-12-011-23W4/0 00/16-20-013-20W4/0 00/08-21-016-19W4/0 00/15-17-017-18W4/0 00/11-02-020-17W4/0 00/07-11-024-15W4/0 00/08-22-026-15W4/0 00/06-27-029-15W4/0 02/10-29-032-14W4/0



This cross section is illustrative to show generalized lithological character and the tops may not precisely represent current ERCB tops or designations. Note that the lowermost Banff may be the Exshaw Formation in ERCB database and this interpretation is a work in progress.



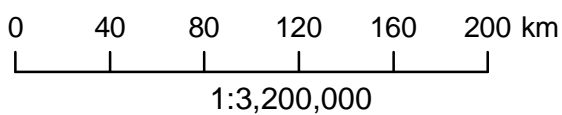
Distribution and Cross Section Index Map: Duvernay and Muskwa Formations

Date Created August 26, 2010

Refer to the ERCB Board Order System for the most recent pool orders.

- Cross Sections
- Conventional Hydrocarbon Pool Orders
- Modified Duvernay Shale Lithologic Extent WCSB Atlas 1994

(Muskwa mainly in the northern portion of Lithologic Extent)

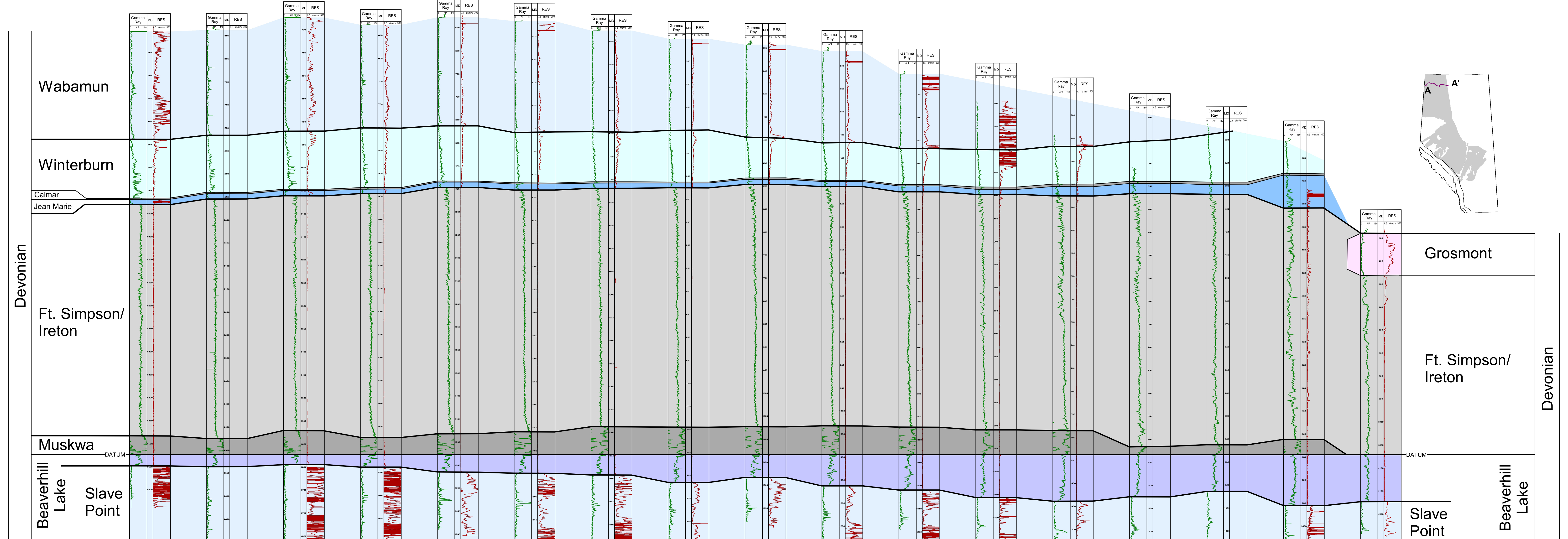


Muskwa A - A' Section

WEST
A

EAST
A'

00/16-27-115-12W6/0 00/05-31-116-10W6/0 00/02-27-118-10W6/0 00/09-11-119-08W6/0 00/02-20-118-06W6/0 00/01-17-118-05W6/0 00/14-25-118-04W6/0 00/05-35-117-03W6/0 00/14-28-117-02W6/0 00/07-02-117-02W6/0 00/01-35-116-01W6/0 00/10-23-116-23W5/0 00/16-08-116-22W5/0 00/09-05-117-22W5/0 00/01-13-118-22W5/0 00/12-12-118-20W5/0 00/10-33-116-13W5/0

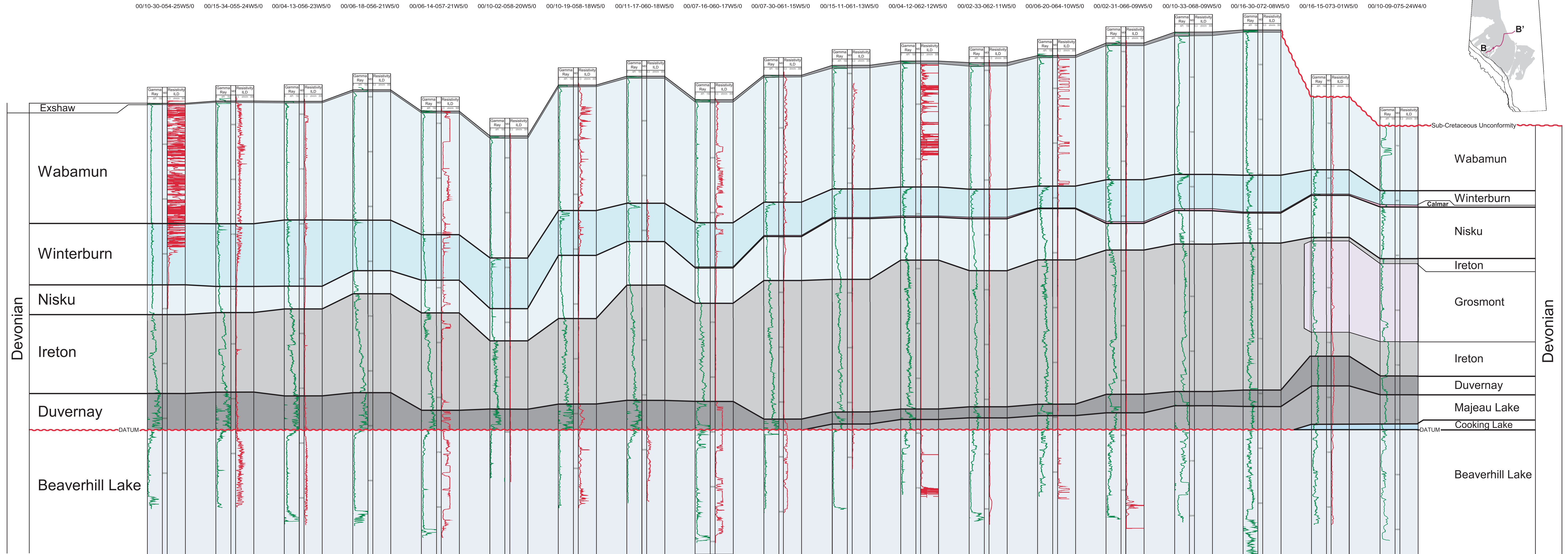
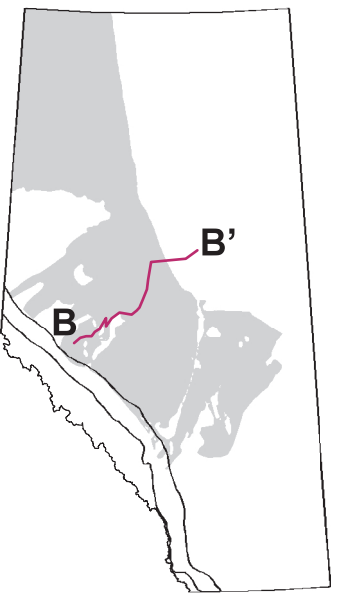


This cross section is illustrative to show generalized lithological character and the tops may not precisely represent current ERCB tops or designations.

Duvernay B - B' Section

SOUTHWEST
B

NORTHEAST
B'



This cross section is illustrative to show generalized lithological character and the tops may not precisely represent current ERCB tops or designations.